

1 Beyond™ 24Flex™

24-Processor Professional Video Workstation

Industry First 24-processor Mobile System for Video Production

- **Supports: RED ONE, Dalsa Origin, VR Phantom, SI-2K, SI-3D and others**
- **Eliminates Proxy Files and Conforming**
- **3D Real-Time Avid Media Composer, Adobe Creative Suite Certified**
- **IRIDAS SpeedGrade and ASSIMILATE SCRATCH Real-time Color Grading**
- **Fully configured for high-end video production**

Ideally suited to handle processor intensive formats and tasks, **1 Beyond 24Flex™** system is the industry's first cost-effective 24-Processor video system providing complete end-to-end online real-time workflow solution for ingest, edit and finish from the new high-resolution digital cinema cameras, such as RED ONE™, Dalsa, Phantom, SI-2K and 3D, and others.

The **1 Beyond 24Flex** has the power to take you further into the future avoiding "Technical

Obsolescence" and yielding the maximum ROI while increasing your productivity by processing every CPU intensive task faster. You can even edit RED RAW-R3D files native in Real-Time.

Perform your rough cuts and selects completely real-time in a dramatically increased 2K high quality image resolution while viewing every step on a native 2K monitor including intermediate (DI) workflows. The **HexDFlex** supports real-time 4K video editing for Adobe Premiere Pro on Windows and 4K resolutions in Adobe After Effects. This maximum horsepower **24Flex** drastically reduces processing time and enables multi-stream real-time 2K effects in the RED workflow.

It can also convert between 4:4:4 and 4:2:2 formats for Single Link HD-SDI output with optional I/O hardware and has 422 machine control. For special effects, DI Color Grading or high resolution editing "On-Line All The Time", the **24Flex** with optional I/O hardware can capture DPX, Cineon, uncompressed Quick Time or Avid DNX-HD and other formats with HD-SDI input of ether 4:2:2 or 4:4:4.



The **1 Beyond 24Flex** brings, for instance, unmatched efficiencies in the editorial and finishing process of RED-originated projects. Using the power of its 24 processors, the **24Flex** can effortlessly edit native RED.R3D footage at 2K high quality resolution in real-time and switch to a native 4K finish without moving or transcoding native video. Thanks to the **24Flex's** unmatched processor power, rendering becomes unnecessary until the final deliverable, and final render times are shortened considerably.

A recent customer test of the **24Flex** with RED RAW video was able to play native R3D 4K files in a 2K high quality sequence in real-time and still had over 40% of the processor power left for additional layers, graphics and effects. Another customer saw a 600% speed increase in Iridas rendering over his Mac Pro i.e. a 90 minute render took 15 minutes.

Available in Tower-Rack Convertible and new SuperWrangler24 Portable configurations.

GOVERNMENT: GSA#GS-35F-0850N

" In Service, Technology and Value, We Are..."

1 Beyond
DIGITAL VIDEO SYSTEMS

www.1Beyond.com - toll free 877.ONE BEYOND [877.663.2396]

© Copyright 2005 - 1 Beyond, Inc. - All Rights Reserved - All logos and trademarks are the properties of their respective owners. All offers, prices and configurations are subject to change without notice.

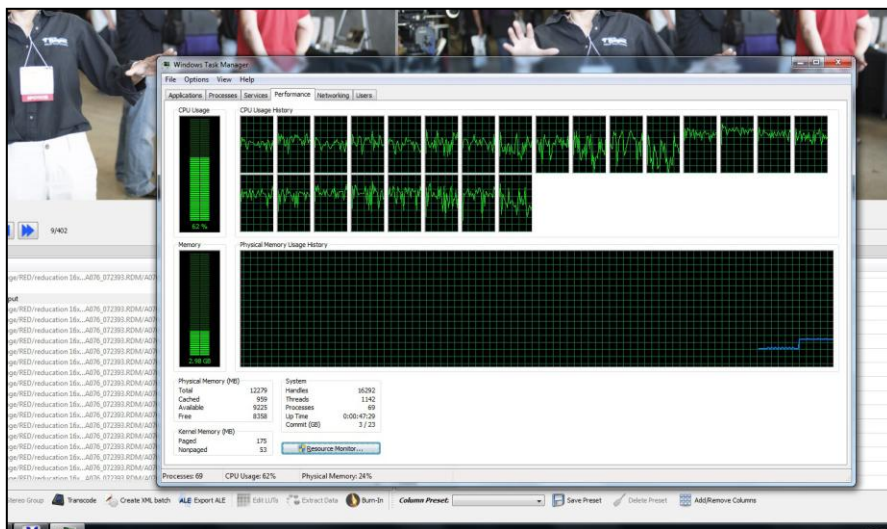
Real-Time 3D Editing: The **1 Beyond 24Flex** provides a new Innovative Time Saving 3D Workflow: Avid MC 5 with CineForm 3D combined with the **24Flex 24** processor system, providing Real-Time 2D/3D editing i.e. with instant 3D review including Real-Time 3D corrections to a 3D monitor. 3D corrections can be made independently for each eye and the resulting correction information is stored in the CineForm 3D Metadata never effecting original video and can be changed at any time. This combination of **1 Beyond 24Flex** system and software allows the combination of 3D Correction Metadata to be calculated in full HD resolution allowing any portion of the timeline (without time restriction) to be played in high resolution 3D to observe 3D balance, flow and 3D transitions.

This workflow also eliminates the time and problems associated with down converting to an Off-Line Avid format, editing Off-Line (not being able to see the full resolution) and then having to take the EDL and Finish On-Line. This **1 Beyond** innovation is called "On-Line All-The-Time". The workflow time savings due to instant editing in full resolution with real-time 3D corrections without rendering can be very significant. At the end of the process, the **1 Beyond 24Flex** can also Transcode to the distribution formats in record time.

Real-Time Red High Resolution Editing: The **1 Beyond 24Flex** provides editing native RED.R3D in full 2K while watching every move on a full resolution 2K monitor, which not only increases productivity but also reduces errors that simply can't be detected in proxy or off-line editing. More processing power from your system enables you to perform time consuming tasks such as compositing, transcoding and finishing, faster and easier than ever before. Never has there been this much horsepower in an affordable editing workstation. It fosters a video professional's creativity, increases productivity and shortens project turnaround time.

The **1 Beyond 24Flex** is the latest complement to the extensive **1 Beyond Tapeless Workflow** portfolio. For example, users can transfer from CF, RED-DRIVE or RED-RAM using the **1 Beyond Wrangler**, transport the data on a **1 Beyond GoHDCart or GoHDMag**, read using the **1 Beyond Wrangler Reader**, edit on the **24Flex**, store on the **1 Beyond EzHDSAN** and archive using a built-in LTO drive. These products can be integrated seamlessly in various combinations to create the ideal workflow solution for demanding film, documentary, episodic TV, news and events use.

A powerful next-generation workstation following the award-winning 8-processor **1 Beyond HD OctoFlex™ and HexDFlex**, the **1 Beyond 24Flex** system includes dual Intel Xeon processors with Hyperthreading for independently processing 24 threads of software simultaneously. The system can be configured with up to 96GBs of memory, 24TBs of internal high performance storage eliminating the expense of external storage, Blu-ray DVD burner and dual DVI graphics. Available with Windows XP or Windows 7, turnkey software options include Adobe CS5, Avid Media Composer, IRIDAS SpeedGrade or ASSIMILATE SCRATCH and certified hardware including Avid MoJo DX, Blackmagic Design, AJA, NVIDIA, Bluefish444, Matrox Axio, and others.



1 Beyond 24Flex with All 24 Processors Working